



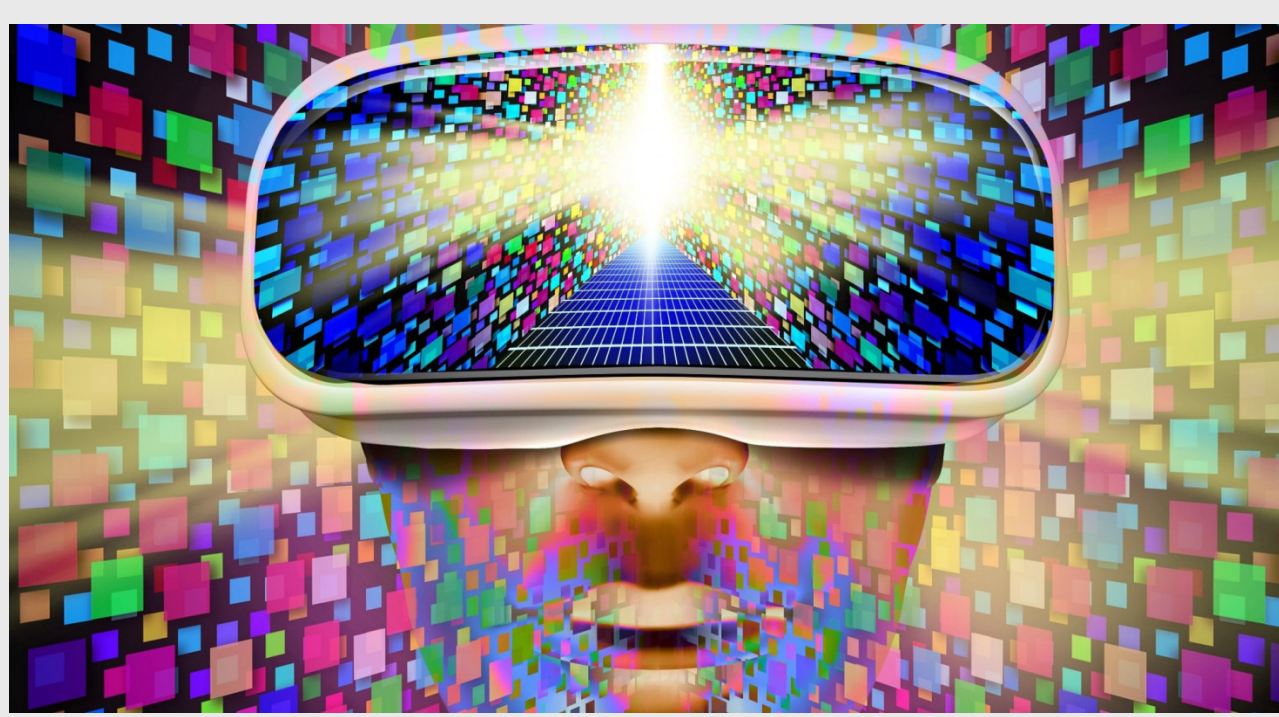
The moments that could have accidentally ended humanity

In recent history, a few individuals have made decisions that could, in theory, have unleashed killer aliens or set Earth's atmosphere on fire.

bbc.com



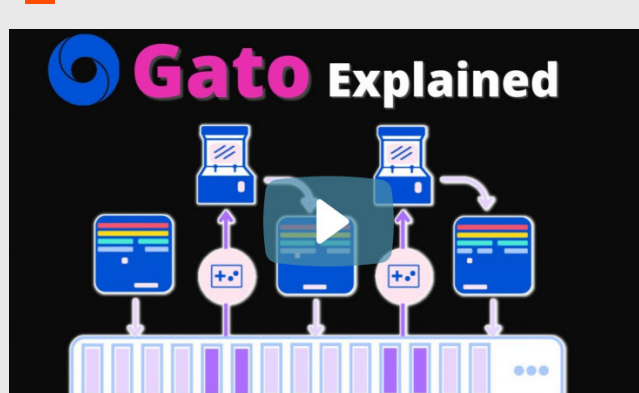
ARTIFICIAL INTELLIGENCE



Meta Challenges OpenAI By Giving Away a Massive Language Model

Meta is giving away some of the family jewels: That's the gist of an announcement from Facebook's parent company. Now the company's researchers announced that they've created a powerful language AI system and are making it freely available to all researchers in the AI community.

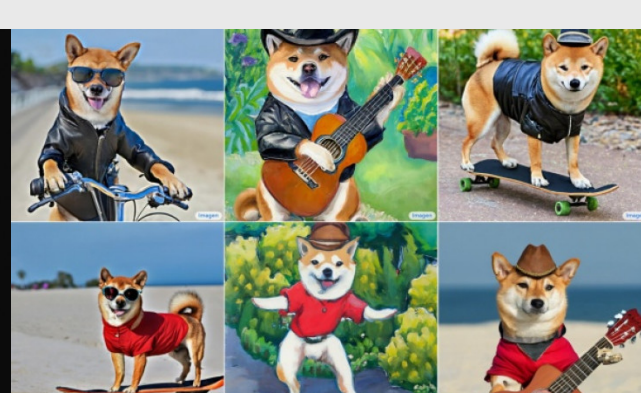
spectrum.ieee.org



Is Gato Really the Future of AI?

DeepMind has released "A Generalist Agent", a paper that introduces their new multi-modal model Gato. But is Gato truly a generalist agent? It is a transform...

youtube.com



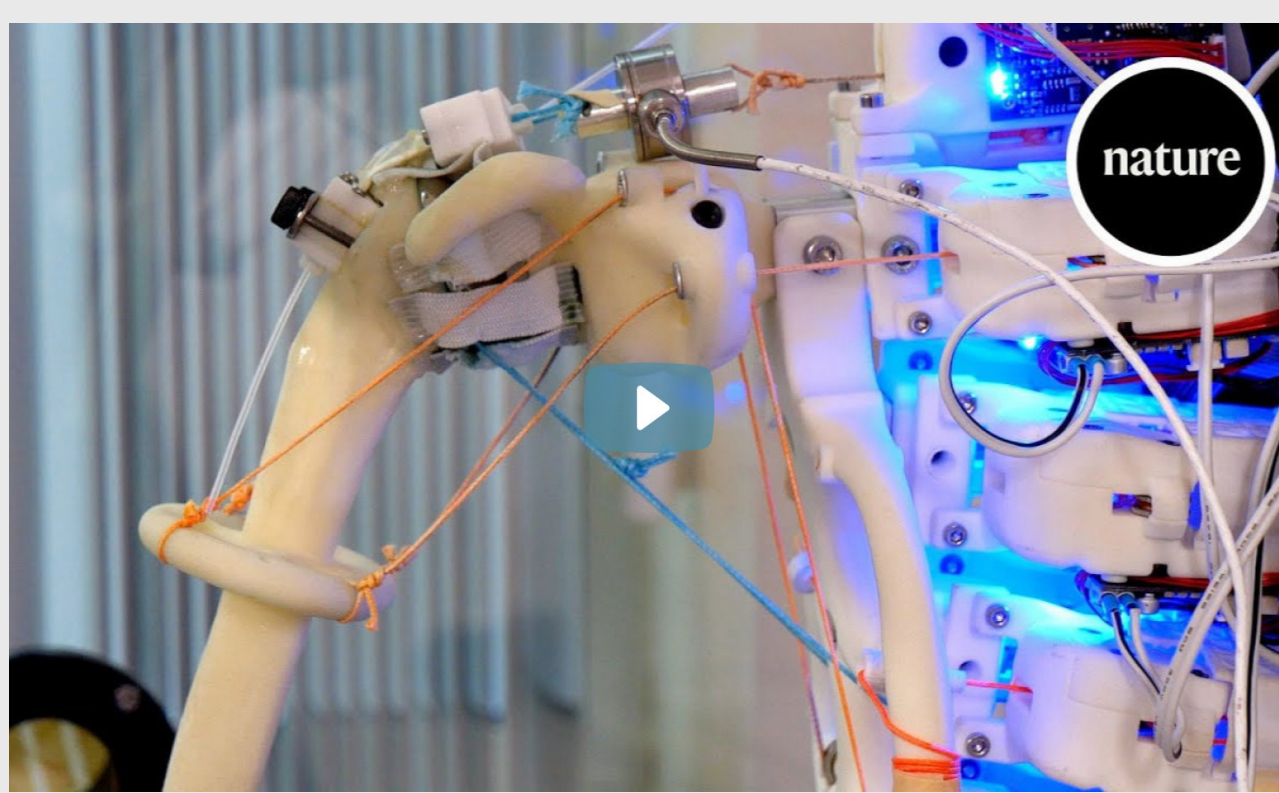
Google's image generator rivals DALL-E in shiba inu drawing

Google Research has publicized Imagen, a text-to-image diffusion-based generator built on large transformer language models.

techcrunch.com



ROBOTICS



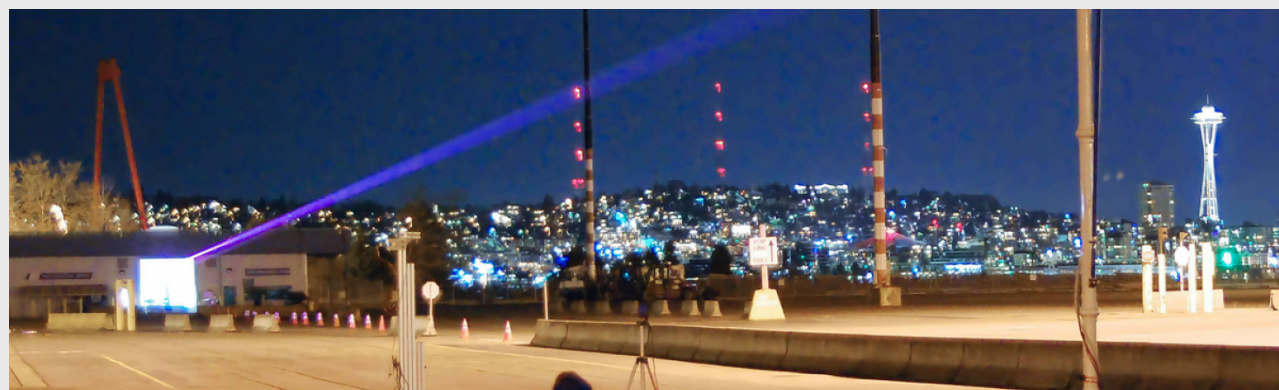
A robotic Petri dish: How to grow human cells in a robot shoulder

Human cells grown in the lab could one day be used for a variety of tissue grafts, but these cells need the right kind of environment and stimulation. New re...

youtube.com



ENERGY



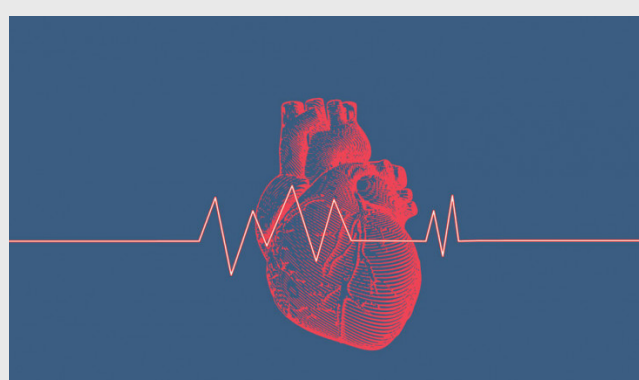
Practical Power Beaming Gets Real

A century later, Nikola Tesla's dream comes true

spectrum.ieee.org



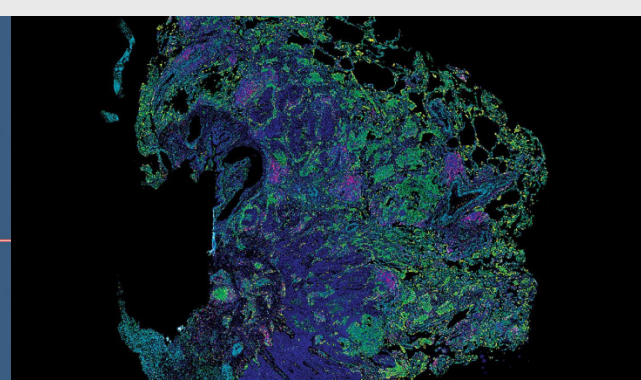
LIFE SCIENCES



A One-and-Done CRISPR Gene Therapy Will Aim to Prevent Heart Attacks

Scientists know the DNA letter swap that can, in theory, drastically lower LDL-C and in turn throttle the risk of heart attacks.

singularityhub.com



Immune Cell Profiles Reveal Cancer's Leading Indicators

Single-cell analyses of greater depth and dimensionality may inform stimulus measures that support cancer-defeating turnarounds.

genengnews.com



AEROSPACE



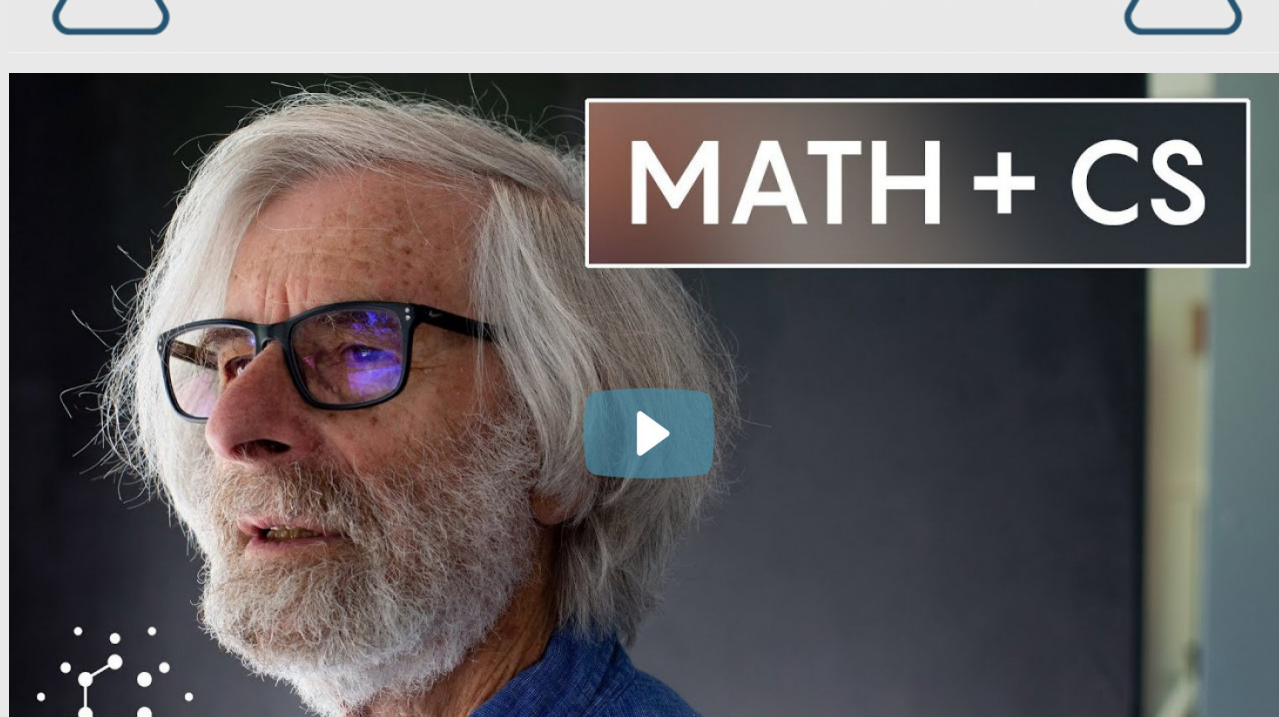
How long-term space missions change the brain

Study of data from NASA, ESA, and Roscosmos find long-duration in space causes brain changes linked to vision problems.

bigthink.com



IN THE LAB



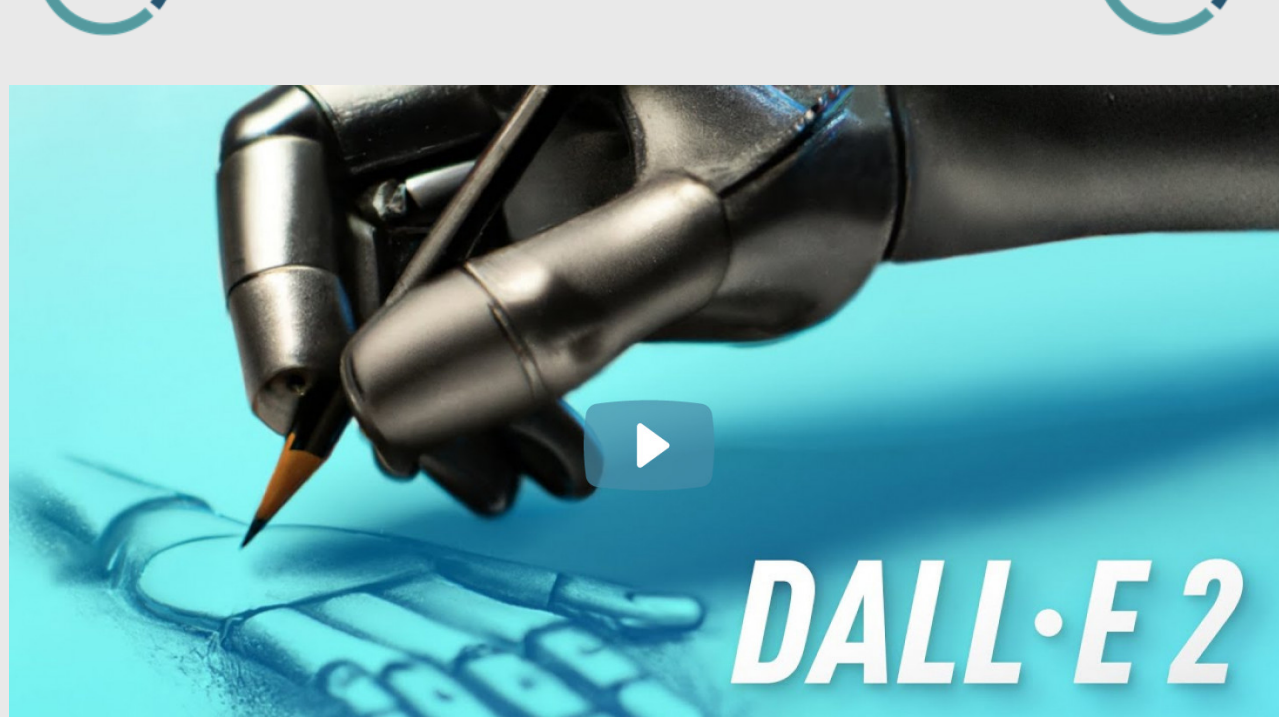
The Man Who Revolutionized Computer Science With Math

Leslie Lamport revolutionized how computers talk to each other. The Turing Award-winning computer scientist pioneered the field of distributed systems, where...

youtube.com



AFTER HOURS



AI Made This Thumbnail!

DALL-E 2 is an AI that can draw anything you ask it for. It's terrifying and amazing at the same time. Tim vs DALL-E: https://youtu.be/MwAAH9tBoMgMKBHD Merch...

youtube.com



SCIENCE IS OUR BUSINESS.
BUSINESS IS OUR SCIENCE.



Tweet Share Forward Share

LEARN FROM THE PAST.
UNDERSTAND THE PRESENT.
EXPLORE THE FUTURE.

AVAILABLE NOW
Everywhere books are sold

FC FAST COMPANY PRESS

PAPERBACK, DIGITAL AND AUDIO